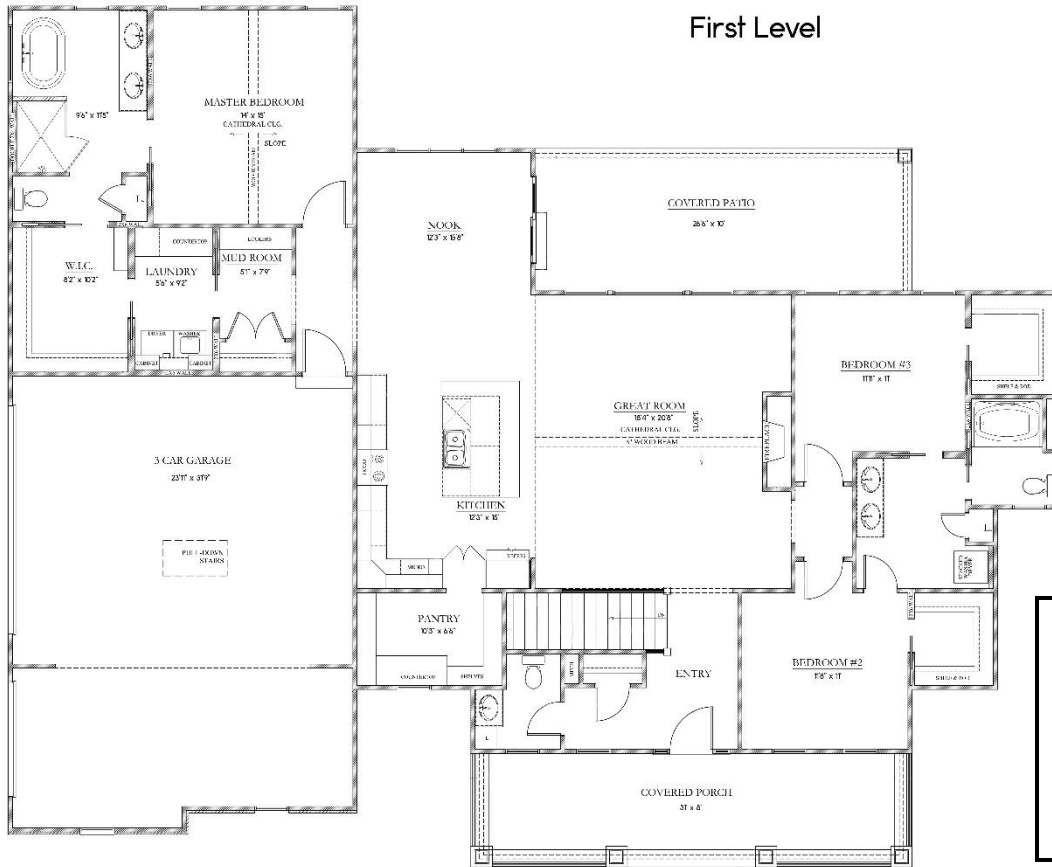


# THE KENNEDY



First Level



- 2237 SQFT
- 3 BEDROOMS
- 2.5 BATHS
- OPEN LIVING CONCEPT

HOME SQUARE FOOTAGES ARE APPROXIMATE AND ARE SUBJECT TO CHANGE. ALL HOME PLANS CAN BE PLACED ON A BASEMENT.

[WWW.MYMBNHOME.COM](http://WWW.MYMBNHOME.COM) | 260-337-3331 | MYMBNHOME@GMAIL.COM