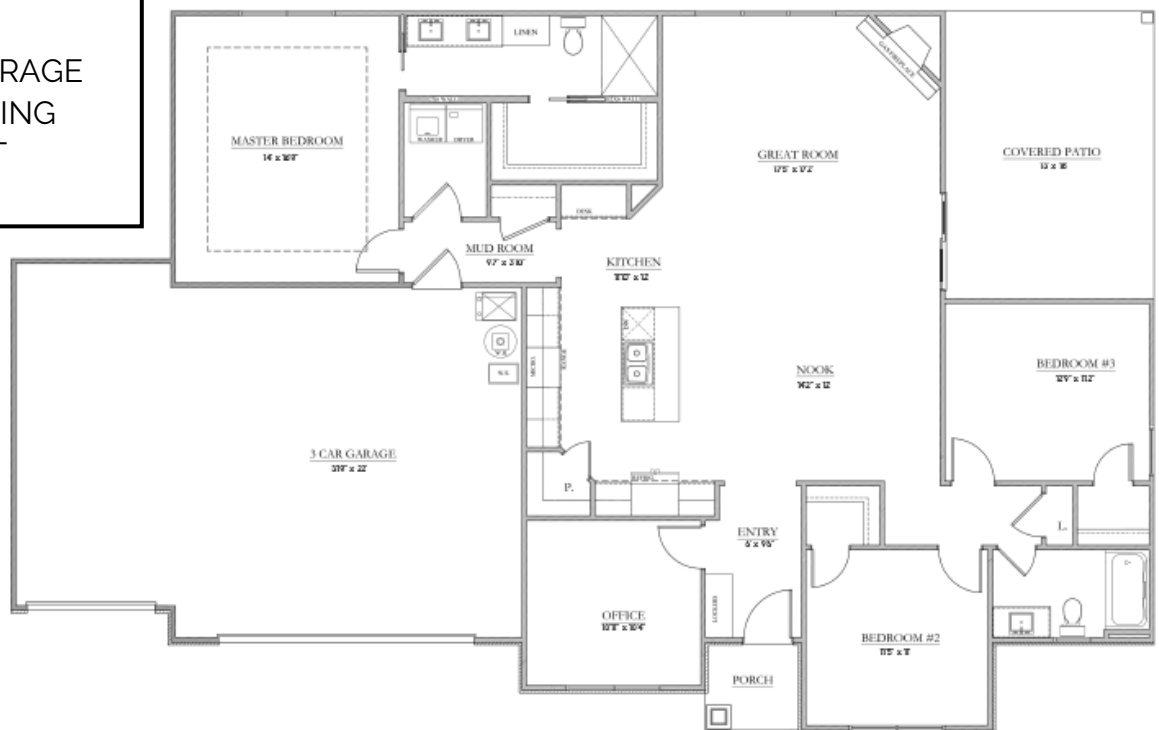


THE TRUMAN II



- 1809 SQFT
- 3 BEDROOMS
- 2 BATHS
- 3 CAR GARAGE
- OPEN LIVING CONCEPT
- OFFICE



HOME SQUARE FOOTAGES ARE APPROXIMATE AND ARE SUBJECT TO CHANGE. ALL HOME PLANS CAN BE PLACED ON A BASEMENT.

WWW.MYMBNHOME.COM | 260-337-3331 | MYMBNHOME@GMAIL.COM