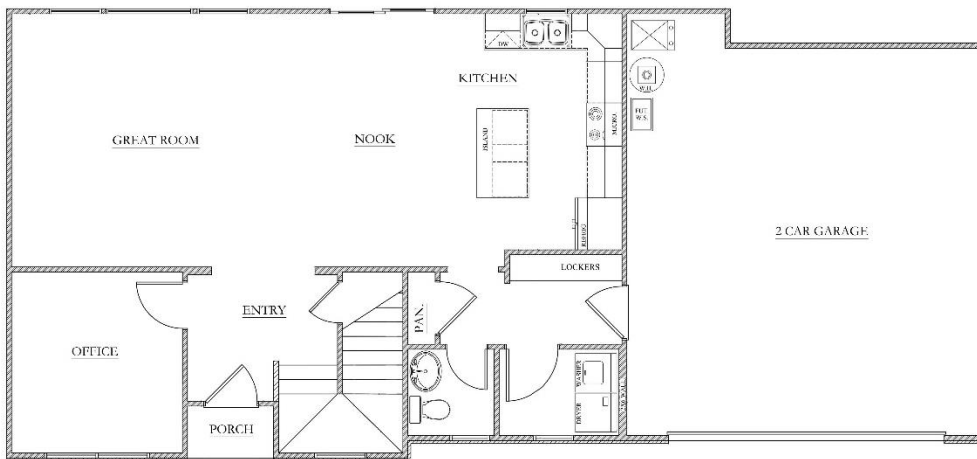


# THE BOSTON

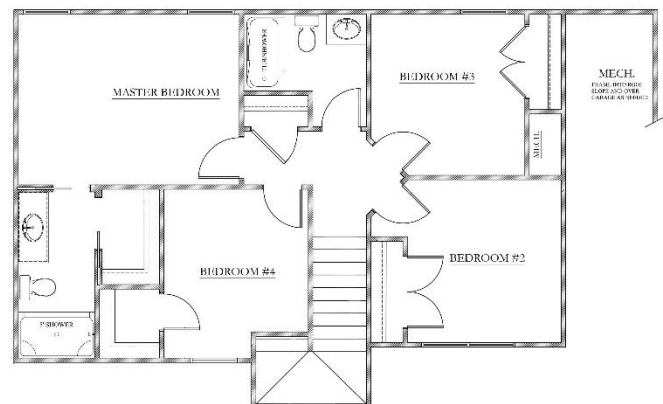


Main Floor



Second Floor

- 1747 SQFT
- 4 BEDROOMS
- 2.5 BATHS
- OPEN LIVING CONCEPT



HOME SQUARE FOOTAGES ARE APPROXIMATE AND ARE SUBJECT TO CHANGE. ALL HOME PLANS CAN BE PLACED ON A BASEMENT.