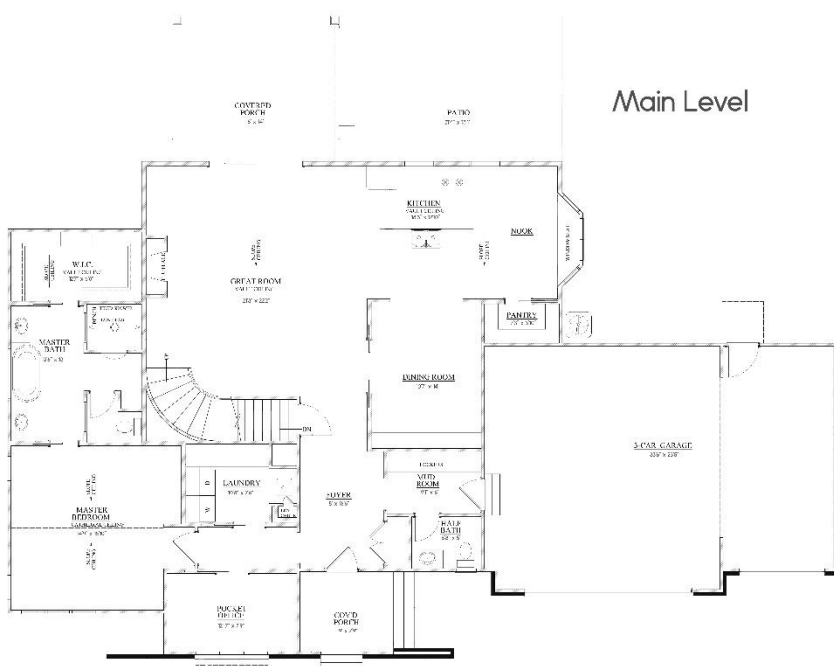


THE OVIRAPTOR



Main Level



Second Level

- 2880 SQFT
- 3 BEDROOMS
- 2.5 BATHS
- 3 CAR GARAGE
- OPEN LIVING CONCEPT
- OFFICE
- BONUS ROOM

HOME SQUARE FOOTAGES ARE APPROXIMATE AND ARE SUBJECT TO CHANGE. ALL HOME PLANS CAN BE PLACED ON A BASEMENT.